



## easy-BLUE Total RNA Extraction Kit

- Extract total RNA from various samples
- Extract total RNA with high purity
- Easy to distinguish by **BLUE COLOR** between aqueous phase and phenol phase
- Continue activity for a long time by protecting oxidation
- No RNase contamination

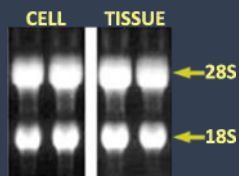
**BEST**

### CHARACTERISTICS

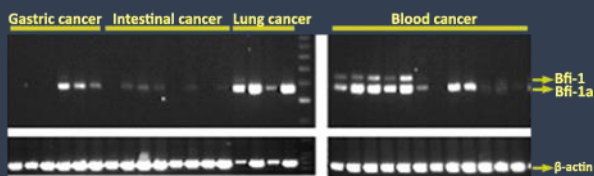
- Optimized method to extract total RNA from tissue to cell
- Extract total RNA with high purity by protecting contamination of DNA and protein
- Highly effective method for Total RNA extraction with water-saturated phenol
- Simple process : Add easy-BLUE in sample - Reaction – Add chloroform – Centrifuge – Isolate from upper layer - Alcohol precipitation – Extract total RNA

### INTERPRETATION OF THE PRODUCTS

- The result of electrophoresis of extraction total RNA from cell and tissues



- The comparison of Bfi-1 gene expression label from various human cancers



### SUBJECT OF APPLICATION

- cDNA SYNTHESIS
- RT-PCR
- Northern Blotting
- Dot Blotting

- Extract Total RNA from various tissues and cells

#### ANIMAL CELL

Sample	Cell	RNA Yield	Purity
SNU 601 (HUMAN)	3 X 10 <sup>6</sup>	45-49 µg	2.02
K562 (HUMAN)	3 X 10 <sup>6</sup>	43-51 µg	2.00
YAC (MOUSE)	3 X 10 <sup>6</sup>	45-53 µg	2.00
B16 (MOUSE)	3 X 10 <sup>6</sup>	55-62 µg	2.00
<i>E.coli</i>	3ml (OD 1.4)	74-83 µg	2.01

#### ANIMAL TISSUE

Sample	Tissue	RNA Yield	Purity
SPLEEN (MOUSE)	30 mg	198-210 µg	2.00
KIDNEY (MOUSE)	30 mg	106-111 µg	2.01
LIVER (MOUSE)	30 mg	110-122 µg	2.00

### ORDERING INFORMATION

Cat. No.	Product	Package
17061	easy-BLUE Total RNA Extraction Kit	100 ml
17061L		100 ml x 5ea