

# Products For Western Blot

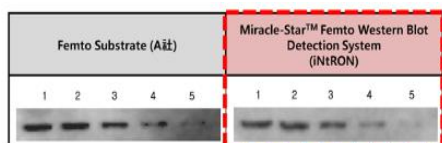
## From extraction to detection

### Ultra signal

#### Miracle-Star™ Femto

Western Blot Detection System

Cat : 16030



K562 cell  
1 = 10pg  
2 = 5pg  
3 = 2.5pg  
4 = 500fg  
5 = 250fg

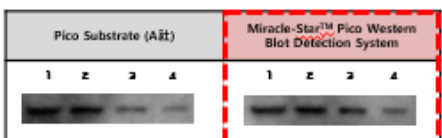
- Ultrasensitivity : Detect low femtograms(fg) level of target protein
- Easily switch from other ECL Substrate and no optimization is necessary
- More stable luminescence is maintained by increasing duration time
- Fast : Specific protein detection may be achieved within 10 min

### Super signal

#### Miracle-Star™ Pico

Western Blot Detection System

Cat : 16029



K562 cell  
1 = 100pg  
2 = 50pg  
3 = 25pg  
4 = 10pg

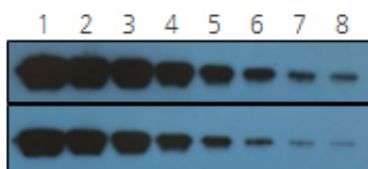
- Supersensitivity : Detect low picograms(pg) level of target protein
- Protein is identified by the reaction of HRP secondary antibodies
- Stable luminescence is maintained by increasing duration time
- Superreactivity with HRP and reduce amounts of 2' antibody used

### High signal

#### Miracle-Star™

Western Blot Detection System

Cat : 16028



5 min after incubation  
1 min exposure

1 h after incubation  
1 min exposure

- High signal intensity : Generate high contrast signals
- Maintain stable luminescence for 2 hours after reaction
- High luminescence reaction is obtained by incubation for 1 to 5 min
- High reactivity with HRP and reduce amounts of 2' antibody used

### ✓ Ordering information

Product Name	Cat.No.	Size	Sensitivity rating	Sensitivity
Miracle-Star™ Western Blot Detection System	16028	200ml	★★★	High Picogram
Miracle-Star™ Pico Western Blot Detection System	16029	200ml	★★★★★	Super Picogram
Miracle-Star™ Femto Western Blot Detection System	16030	200ml	★★★★★	Ultra Femtogram

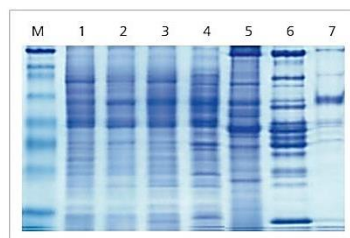
## Protein Extraction



Cat. 17081 / 100ml

- Simply extract protein from all kinds of cells and tissues
- 5 kinds of protease inhibitors included to minimize protein degradation

## PRO-PREP™ Protein Extraction Solution



Total protein was extracted with PRO-PREP™ Protein Extraction Solution, and then electrophoresed on 15% SDS-PAGE gel and stained with coomassie blue dye.

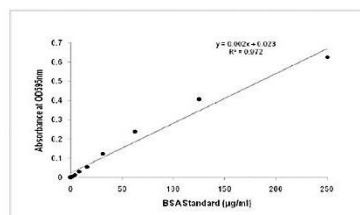
## Protein quantification



Cat. 21011 / 100ml

- Easy and fast quantification of 10-200 ng/ml based on Bradford assay
- Low Background interference and simple application within 10 min

## PRO-MEASURE™ Protein Measurement Solution



Using PRO-MEASURE™ Protein Measurement Solution, the concentration of BSA was diluted and the absorbance at 595 nm was measure to create a standard curve.

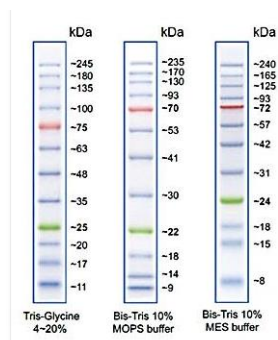
## Protein Marker



Cat.No.24052 / 250ul

- 12 bands between 10 and 245 kDa are available
- High efficiency with small amounts

## GangNam-STAIN™ Prestained Protein Ladder



Migration patterns in different electrophoresis conditions.

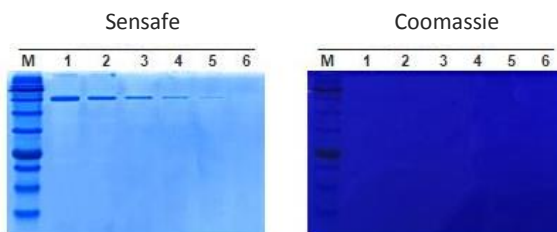
## Gel Staining



Cat.No.31194 / 1L

- Protein bands are identified without destaining
- Odorless, non-flammable, harmless and safe to human body (Methanol and acetic acid are not contained)

## SenSafe™ Fast Protein Staining Solution

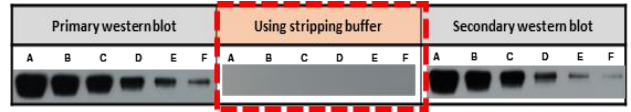


Comparison of band patterns after staining with SenSafe™ Fast and Coomassie blue.



Cat.No.21112 / 500ml

- Antibody can be removed by reaction at room temperature



After confirming the protein bands through the primary western blot, NomeIRT™ Western Blot Stripping Buffer removed the antibody. Secondary western blotting was performed using the same membrane, and protein band was identified. You can reuse the membrane for one or more protein identification and save time.

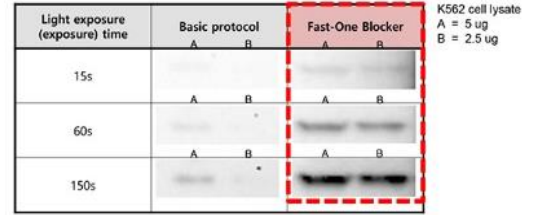
## Blocking Solution

## Fast-One Blocker (Blocking Solution and Signal Enhancer)



Cat.No.16174 / 500ml

- Blocking primary / secondary antibody at the same time  
- Fast quantification of 10-200 ng/ml based on Bradford assay



As a result of the band detection, we were able to observe higher sensitivity using Fast-One Blocker and confirmed reproducibility through repeated experiment with shortened time ( About 4 hours -> About 1.5 hours).

## Premade Buffers

## Providing 500 types of Premade Buffers



Product Name	Use	Cat.No.	Size
0.5M Tris-Cl, pH 6.8 w/SDS (Stacking gel buffer)	Stacking Gel	1BS-BT023	500ml
1.5M Tris-Cl, pH 8.8 w/SDS (Resolving gel buffer)	Resolving Gel	1BS-BT024	500ml
5X SDS-PAGE Loading Buffer w/2-Mercaptoethanol	Loading Buffer	1BS-BS024	10ml
10X Tris-Glycine Buffer(w/SDS)	Running Buffer	1BS-BT014	1000ml
10X Western transfer buffer, carbonate	Transfer	1BS-BW008	1000ml
10X TBS with Tween-20	Washing	1BS-BT007	1000ml

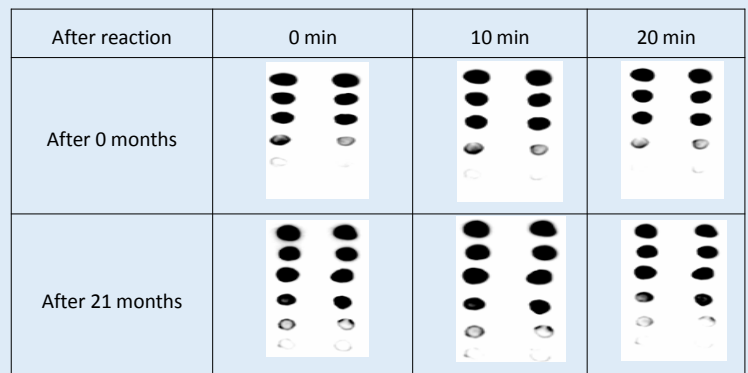
**NEW**

## WEST Queen RTS Western Blot Detection kit

Coming Soon!!



- \* Able to store at room temperature
- Enhanced chemiluminescence buffer type
- RTS : Room Temperature & Stability
- Stable signal appears after 20min activation



\* Performance based on different time