

# "Latest" Mycoplasma Detection Kits

Advanced Detection of  
Mycoplasma Contamination  
Superior Sensitivity With Latest Version

## ❖ Common key features

- Premix type for PCR and Real-time PCR components
- Fast detection & Easy to use
- Sensitivity validated at least 10 CFU/ml
- Detecting wide range of mycoplasma species

## ✓ What are the exceptional features?

1

### e-Myco™ Plus<sup>2</sup> Mycoplasma PCR Detection Kit

- Room temperature stability - Easy & Fast delivery
- Cake appearance of lyophilized product - Safety & Efficacy
- Detecting 209 species of mycoplasma

2

### e-Myco™ VALiD<sup>2</sup> Mycoplasma PCR Detection Kit

- Room temperature stability – Easy & Fast delivery
- Cake appearance of lyophilized product – Safety & Efficacy
- Validation analysis according to the E.P guideline / 7 species were tested :  
(*M.pneumonia*, *M.argnini*, *M.hyorhinitis*, *M.fermetans*, *M. orale*, *A.laidawii*, *M.gallisepticum*)

3

### e-Myco™ VALiD-Q<sup>2</sup> Mycoplasma Real-time PCR Kit

- Room temperature stability - Easy & Fast delivery
- Cake appearance of lyophilized product - Safety & Efficacy
- Improvement on detection efficiency and specificity
- Validation analysis according to the E.P guideline for Real-time PCR

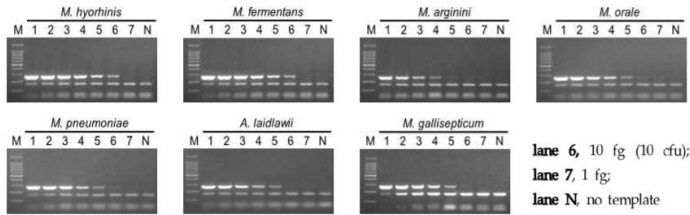
## ❖ Ordering Information

Application	Product Name	Cat. No.	Size
Detection	e-Myco™ Plus <sup>2</sup> Mycoplasma PCR Detection Kit	IP21430	48T
		IP21431	8T
	e-Myco™ VALiD <sup>2</sup> Mycoplasma PCR Detection Kit	IP21432	48T
		IP21433	8T
	e-Myco™ VALiD-Q <sup>2</sup> Mycoplasma Real-time PCR Kit	IP24421	48T
		IP24422	8T

1

## e-Myco™ Plus<sup>2</sup> Mycoplasma PCR Detection Kit

Technical Data | Analytical sensitivity test



To identify the analytical sensitivity, genomic DNA of 7 species of mycoplasma from cell culture were purified and detected and sensitivity was validated at least 10 CFU/ml.

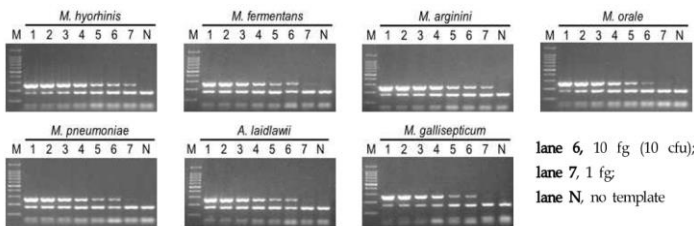
LaneM, SiZer™-100 DNA Marker; Lane 1, 1×10<sup>6</sup> cfu/ml of gDNA; Lane 2, 1×10<sup>5</sup> cfu/ml of gDNA; Lane 3, 1×10<sup>4</sup> cfu/ml of gDNA; Lane 4, 1×10<sup>3</sup> cfu/ml of gDNA; Lane 5, 1×10<sup>2</sup> cfu/ml of gDNA; Lane 6, 10 cfu/ml of gDNA; Lane 7, 1 cfu/ml of gDNA; Lane N, No template control.



2

## e-Myco™ VALiD<sup>2</sup> Mycoplasma PCR Detection Kit

Technical Data | Analytical sensitivity test



To identify the analytical sensitivity, genomic DNA of 7 species of mycoplasma from cell culture were purified and detected and sensitivity was validated at least 10 CFU/ml.

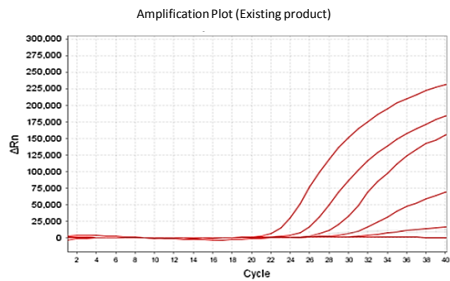
LaneM, SiZer™-100 DNA Marker; Lane 1, 1×10<sup>6</sup> cfu/ml of gDNA; Lane 2, 1×10<sup>5</sup> cfu/ml of gDNA; Lane 3, 1×10<sup>4</sup> cfu/ml of gDNA; Lane 4, 1×10<sup>3</sup> cfu/ml of gDNA; Lane 5, 1×10<sup>2</sup> cfu/ml of gDNA; Lane 6, 10 cfu/ml of gDNA; Lane 7, 1 cfu/ml of gDNA; Lane N, No template control.



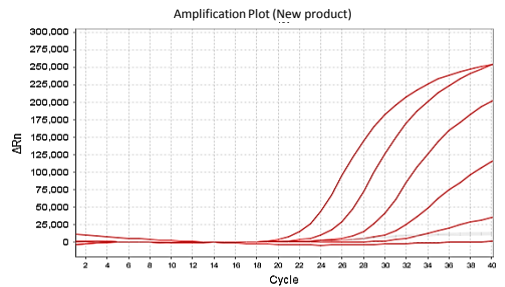
3

## e-Myco™ VALiD-Q<sup>2</sup> Mycoplasma Real-time PCR Detection Kit

Technical Data | Comparison data between existing product and new product



VS



Copy No.	Ct Value	
	Conventional one	New one
10 <sup>5</sup> CFU	22.42	21.37
10 <sup>4</sup> CFU	25.10	24.12
10 <sup>3</sup> CFU	27.83	27.25
10 <sup>2</sup> CFU	30.82	30.07
10 <sup>1</sup> CFU	37.97	33.83
1 CFU	N/A	N/A

\* Limit of detection (LOD) was ≤10 CFU/ml and detection efficiency was increased.

